



You have your brush, you have your colors,  
you paint paradise, then in you go.

Nikos Kazantzakis



# TABLE OF CONTENTS

TABLE OF CONTENTS	pg. 2
THE STORY OF BAMBOO LIVING	pg. 3
THE MIRACLE OF BAMBOO	pg. 4
HOME TYPES - HYBRID vs. SIGNATURE	pg. 5
WHAT'S INCLUDED	pg. 6
EXCLUSIONS	pg. 7
PRICING	pg. 8-15
IMAGE GALLERY	pg. 16-21
READY, SET, BUILD	pg. 22-24
MEET YOUR DREAM TEAM	pg. 25-26
TESTIMONIALS	pg. 27



I believe a leaf of grass is no less than the journey-  
work of the stars.

Walt Whitman

# THE STORY OF BAMBOO LIVING



## A SHOOT IS PLANTED

During a walk through the bamboo forest on Maui in 1994, our founder Jeffree Trudeau experienced an epiphany. He understood that it was time to make his vision of “a better way to build” a reality. Shortly after his resolve, he met Co-founder, Architect David Sands, and together they began to co-create the first certified and permitted bamboo homes in the Western World.

Bamboo Living Homes are an imaginative and bold solution to the tremendous impact caused by conventional building practices. Every bamboo home that goes into production saves about 10 acres of forest from being cut down. To date, there are more than 350 homes in the Hawaiian Islands and other locations in the world.

The enduring quality and structural integrity of bamboo is a testament to the combined skills and genius of Jeffree and David. Bamboo Living Homes are still the only international building code certified, permit-able bamboo structures in the world. We invite you to join the growing family of bamboo homeowners and be a part of a truly grassroots movement. Together, we can take sustainable building to a new shade of green.



# THE MIRACLE OF BAMBOO



BEAUTIFUL & VERSATILE	Bamboo has a naturally beautiful aesthetic and is unique, interesting, and authentic. Diverse uses in everyday life: building materials, furniture, clothing, paper, high tech, food, bio-mass, fodder, and more!
STRONG	Bamboo is a strong and enduring building material. It has the same tensile strength as mild steel, and all our homes are engineered to withstand hurricane force winds. In 1995, Bamboo Living homes stood strong when a hurricane hit the Cook Islands with 173 mph winds.
DURABLE	Bamboo Living structural poles are thoroughly treated and third-party inspected with time-tested, natural, non-toxic borates. Borates are a safe, easy, and very effective way to protect all wood species from any kind of insect or decay attack.
FAST-GROWING	Bamboo is a grass, and it grows like a grass: fast. Bamboo can grow to its full height and diameter in a matter of months and be ready to harvest for structural use in 3 to 4 years. When shooting, bamboo grows 3-4 feet per day.
SOLUTION TO DEFORESTATION	Bamboo efficiently produces more usable timber/acre/year than trees. How? The root system of a tree dies after harvesting and each new tree seedling must grow a new root system. After harvesting bamboo culms, the root system does not die, but feeds new shoots, and mature culms send carbohydrates to the new shoots.
SEQUESTERS CARBON	When sustainably harvested bamboo is transformed into long lasting durables (like houses or properly treated building materials), the embodied CO2 is stored for 150 years, thus creating an effective carbon capture and storage system. According to preliminary studies, each Bamboo Living 1000 sq ft house embodies 28 tons of CO2.



If you truly love Nature, you will find beauty everywhere.

Vincent Van Gogh

# CHOOSE YOUR GREEN HOME

## HYBRID HOME PACKAGE



Hybrid Villa 1950 - conventional walls with split bamboo ceiling finish.

- Hot or Cold Climates
- Building Codes Require Double Walls
- Conventional, Smooth Wall Interior

**Hybrid Home Packages** are perfect for building codes that require insulation for heating or cooling. Your walls will be conventionally framed on-site (materials not included in package) and finished with our exterior bamboo siding, roof system, porches, and bamboo trim. Hybrid Home Packages combine an exquisite balance of the Signature Series' exotic exterior look, with a modern, smooth wall interior.

## SIGNATURE HOME PACKAGE



Signature Bali 576 - bamboo-framed single walls with paint finish.

- Temperate or Tropical Climates
- Building Codes Allow Single Walls
- Exposed Bamboo on Interior Walls

**Signature Home Packages** are great for temperate climates with building codes that allow single-wall construction. Your package includes bamboo-framed exterior single-wall panels, complete with our natural split bamboo exterior siding. Select your interior wall finish, either: paint color of your choice, woven bamboo, or split bamboo, and enjoy beautiful exposed bamboo throughout.



Signature Celestial 3 with thatch roofing.

# BAMBOO HOME PACKAGES

## WHAT'S INCLUDED? Bamboo Home Package Inclusions

BAMBOO COMPONENT	HYBRID	SIGNATURE
Bamboo Single-Wall Panels with Interior Finish		●
Exterior Split Bamboo Siding	●	●
Bamboo Porches with Bamboo Railings	●	●
Bamboo Roof Structure with Sub-Roof	●	●
Interior Ceiling Finish with Exposed Bamboo	●	●
3+ Foot Eaves with Bamboo Finish	●	●
Bamboo Trim Package	●	●
Bamboo Door and Window Jambs		●

INCLUDED

## BAMBOO LIVING UPGRADES & OPTIONS

Dormers	Skylight openings	Interior bamboo doors
Bamboo flooring	Flying gable roof	Interior closet doors
Bamboo cabinets	Cupolas	Bamboo furniture



interior bamboo doors



flying gable roof



bamboo cabinets



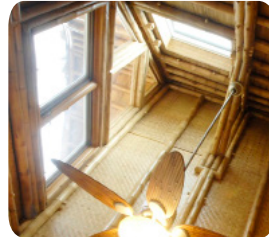
dormers



bamboo flooring



interior closet doors



skylight openings



cupolas



# OWNER ADDS



Contractors assembling the Bamboo Living exterior wall panels of a Signature Home Package.

**EXCLUSIONS** The following materials and services are not included in your Bamboo Home Package. You may handle these items on your own or hire a builder/contractor to handle them for you.

Site Preparation	Utilities & Septic	Electricity
Foundation (Post & Pier or Slab)	Plumbing	Sub-floor
Flooring*	Cabinets*	Countertops
Windows	Interior Doors*	Exterior Doors
Stairs (with Railings and Pickets*)	Decking	Wall Framing & Drywall (for Hybrid Package)
Interior Drywall/Paint	Fixtures & Accessories	Roofing - water barrier plus roofing materials, either metal, tile, thatch, or shingles

## Where can I build a Bamboo Living Home?

Anywhere! We offer two options - Signature: single wall for breezy, tropical climates, or Hybrid: double wall for regional building codes that require insulation or cooler climates.



\* Bamboo Living can provide - see Upgrades & Options on page 6 or call for details.

# BAMBOO BUNGALOWS - LESS THAN < 600 SF

## ZEN 100



Single Room		
100 SF Interior	Hybrid Bamboo Home Package	\$9,150
40 SF Porch	Signature Bamboo Home Package	\$11,350

## BONSAI



Tiny House		
184 SF Interior		
52 SF Loft	Signature Bamboo Home Package	\$19,800

## KONA 192



Studio		
192 SF Interior	Hybrid Bamboo Home Package	\$16,900
64 SF Porch	Signature Bamboo Home Package	\$21,120

## OHANA 15



Studio		
242 SF Interior	Hybrid Bamboo Home Package	\$25,750
157 SF Porch	Signature Bamboo Home Package	\$30,399

## ZEN 400



Studio		
400 SF Interior	Hybrid Bamboo Home Package	\$33,360
96 SF Porch	Signature Bamboo Home Package	\$42,160



\*All prices subject to change at any time without notice. Package prices do not include architectural/engineering fees, site work, shipping, assembly, finish constructions/materials, customs, or tax. Bamboo Living does not provide build/construction services.



# BAMBOO BUNGALOWS - LESS THAN < 600 SF

## KALANI



Studio		
449 SF Interior	Hybrid Bamboo Home Package	\$47,060
302 SF Porch	Signature Bamboo Home Package	\$56,930

## ZEN 560



1 Bedroom, 1 Bath		
560 SF Interior	Hybrid Bamboo Home Package	\$47,960
160 SF Loft	Signature Bamboo Home Package	\$60,280

## BALI 576



Studio		
576 SF Interior	Hybrid Bamboo Home Package	\$48,320
144 SF Porch	Signature Bamboo Home Package	\$60,985



Signature Bali 576 woven bamboo ceiling finish with painted walls.



Signature Bali 576 living area and corner bathroom.



\*All prices subject to change at any time without notice. Package prices do not include architectural/engineering fees, site work, shipping, assembly, finish constructions/materials, customs, or tax. Bamboo Living does not provide build/construction services.

# BAMBOO ABODES - 600 SF - 1000 SF

## PACIFIC 612



1 Bedroom, 1 Bath			
492 SF Interior			
462 SF Porch	Hybrid Bamboo Home Package		\$69,145
120 SF Loft	Signature Bamboo Home Package		\$84,170

## OHANA 20



Studio or 1 Bedroom, 1 Bath			
692 SF Interior	Hybrid Bamboo Home Package		\$53,545
126 SF Porch	Signature Bamboo Home Package		\$67,135

## OHANA 30



1 or 2 Bedroom, 1 Bath			
707 SF Interior	Hybrid Bamboo Home Package		\$66,070
360 SF Porch	Signature Bamboo Home Package		\$80,060

## BALI 768



1 Bedroom, 1 Bath			
768 SF Interior	Hybrid Bamboo Home Package		\$61,885
192 SF Porch	Signature Bamboo Home Package		\$77,090

## ZEN 880



2 Bedroom, 2 Bath			
880 SF Interior	Hybrid Bamboo Home Package		\$68,560
192 SF Porch	Signature Bamboo Home Package		\$86,945



\*All prices subject to change at any time without notice. Package prices do not include architectural/engineering fees, site work, shipping, assembly, finish constructions/materials, customs, or tax. Bamboo Living does not provide build/construction services.

# BAMBOO ABODES - 600 SF - 1000 SF

## BALI 960



2 Bedroom, 2 Bath

960 SF Interior	Hybrid Bamboo Home Package	\$77,090
256 SF Porch	Signature Bamboo Home Package	\$97,152

## PACIFIC 992



2 Bedroom, 2 Bath

872 SF Interior		
570 SF Porch	Hybrid Bamboo Home Package	\$99,865
120 SF Loft	Signature Bamboo Home Package	\$123,670



Signature Pacific 992 living area with split bamboo ceiling finish.



Signature Pacific 992 kitchen with woven bamboo wall finish.

## CELESTIAL 1000



2 Bedroom, 2 Bath

1000 SF Porch	Hybrid Bamboo Home Package	\$80,960
280 SF Loft	Signature Bamboo Home Package	\$101,860



\*All prices subject to change at any time without notice. Package prices do not include architectural/engineering fees, site work, shipping, assembly, finish constructions/materials, customs, or tax. Bamboo Living does not provide build/construction services.

# BAMBOO ABODES - OVER 1000 SF

## ZEN 1040



3 Bedroom, 2 Bath			
1040 SF Interior	Hybrid Bamboo Home Package	\$82,460	
256 SF Porch	Signature Bamboo Home Package	\$104,195	

## PACIFIC QUEEN



2 or 3 Bedroom, 2 Bath			
938 SF Interior			
500 SF Porch	Hybrid Bamboo Home Package	\$104,670	
160 SF Loft	Signature Bamboo Home Package	\$131,645	

## BALI 1152



2 or 3 Bedroom, 2 Bath			
1152 SF Interior	Hybrid Bamboo Home Package	\$89,975	
256 SF Porch	Signature Bamboo Home Package	\$114,048	

## POLYNESIAN 1294



2 or 3 Bedroom, 2 Bath			
1152 SF Interior			
640 SF Porch	Hybrid Bamboo Home Package	\$127,820	
142 SF Loft	Signature Bamboo Home Package	\$155,355	

## PACIFIC SANCTUARY



2 or 3 Bedroom, 2.5 Bath			
1293 SF Interior			
873 SF Porch	Hybrid Bamboo Home Package	\$160,425	
282 SF Loft	Signature Bamboo Home Package	\$199,235	



\*All prices subject to change at any time without notice. Package prices do not include architectural/engineering fees, site work, shipping, assembly, finish constructions/materials, customs, or tax. Bamboo Living does not provide build/construction services.

# BAMBOO ABODES - OVER 1000 SF

## BALI 1344



3 Bedroom, 3.5 Bath

1344 SF Interior	Hybrid Bamboo Home Package	\$110,880
448 SF Porch	Signature Bamboo Home Package	\$140,450

## HANAIEI 1352



3 Bedroom, 3.5 Bath

1352 SF Interior	Hybrid Bamboo Home Package	\$131,604
856 SF Porch	Signature Bamboo Home Package	\$161,348

## POLYNESIAN 1619



3 Bedroom, 2 Bath

1344 SF Interior		
784 SF Porch	Hybrid Bamboo Home Package	\$159,275
275 SF Loft	Signature Bamboo Home Package	\$198,440



Signature Poly 1619 with woven bamboo ceiling and painted walls.



Signature Poly 1619 bedroom with woven bamboo ceiling finish.



\*All prices subject to change at any time without notice. Package prices do not include architectural/engineering fees, site work, shipping, assembly, finish constructions/materials, customs, or tax. Bamboo Living does not provide build/construction services.

# BAMBOO ABODES - OVER 1900 SF

## VILLA 1950



3 Bedroom, 2.5 Bath

1950 SF Interior	Hybrid Bamboo Home Package	\$170,035
835 SF Porch	Signature Bamboo Home Package	\$212,932



Hybrid Villa 1950 great room with split bamboo ceiling finish.



Hybrid Villa 1950 conventionally-framed walls with smooth interior.

## VILLA 2240



2 Bedroom, 2.5 Bath

2240 SF Interior	Hybrid Bamboo Home Package	\$191,400
880 SF Porch	Signature Bamboo Home Package	\$240,680

## VILLA 2745



4 Bedroom, 4.5 Bath

2745 SF Interior	Hybrid Bamboo Home Package	\$213,645
656 SF Porch	Signature Bamboo Home Package	\$274,320



\*All prices subject to change at any time without notice. Package prices do not include architectural/engineering fees, site work, shipping, assembly, finish constructions/materials, customs, or tax. Bamboo Living does not provide build/construction services.

# BAMBOO ABODES - OVER 1900 SF

## CELESTIAL 3



3 Bedroom, 3.5 Bath

2766 SF Interior	Hybrid Bamboo Home Package	\$240,125
1163 SF Porch	Signature Bamboo Home Package	\$299,978

## PACIFIC VILLA



5 Bedroom, 3.5 Bath

3040 SF Interior	Hybrid Bamboo Home Package	\$240,885
813 SF Porch	Signature Bamboo Home Package	\$307,765

## CONDO DESIGN



4-Plex - 3 Bedroom, 2.5 Bath per unit

7168 SF Interior	Hybrid Bamboo Home Package	Call for price
2944 SF Porch	Signature Bamboo Home Package	Call for price



Custom bamboo home with Japanese glazed tile roof, Italian stucco finish, and exposed interior vaulted bamboo ceiling.



\*All prices subject to change at any time without notice. Package prices do not include architectural/engineering fees, site work, shipping, assembly, finish constructions/materials, customs, or tax. Bamboo Living does not provide build/construction services.

# IMAGE GALLERY



Hybrid Villa 1950 - 3 Bedroom, 2.5 Bath. Central great room opens to a generous lanai with travertine stone floor.



Split bamboo ceiling finish with exposed bamboo trusses.



Split bamboo siding and loose weave porch ceiling finish.



Contemporary, spacious kitchen with high-end finishes.



Beautiful views from the master bath garden tub.



# IMAGE GALLERY



Custom Signature 2-Story Bali. 3 bedrooms, 3 baths with a total of 2082 sf interior and 862 sf covered porch.



Living area with exposed bamboo and painted walls.



Guest bedroom with split bamboo ceiling finish.



Bath with painted walls and bamboo cabinets.



Exterior view with spacious covered porches.

# IMAGE GALLERY



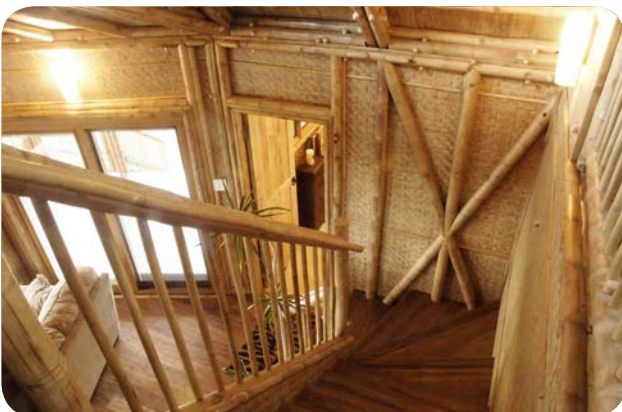
Signature Pacific 992 with synthetic thatch roofing and skylights, on post and pier foundation.



Split bamboo ceiling finish and woven bamboo walls.



View of loft and beautiful exposed bamboo trusses.



Stairway from loft with woven bamboo interior wall finish.



Loft view of living room. Sliders open to wrap-around lanai.

# IMAGE GALLERY



Multi-unit luxury vacation rental property comprised of four Bamboo Living structures connected by walkways.



Signature Bali 576 studio with woven bamboo ceiling.



Signature Bali 576 sitting area with painted walls.



Signature Zen 400 studio with woven bamboo ceiling.



Signature Zen 768 bedroom with woven bamboo ceiling.

# IMAGE GALLERY



Custom Signature Bali on raised 17' tsunami foundation. 2 bedrooms, 2 baths, and a private residential elevator.



Woven bamboo finishes on walls and ceilings.



Kitchen with custom bamboo artwork above cabinets.



Guest bedroom with lanai entrance and expansive views.



Dining area with exposed bamboo x-braces and trusses.

# IMAGE GALLERY



Signature Polynesian 1619 front porch with split bamboo exterior siding, bamboo porch posts, railing, and pickets.



Painted walls with bamboo ceiling and stairway to loft.



Master suite with woven bamboo ceiling and painted walls.



Guest bedroom with exposed bamboo x-braces.



Master bath with beautiful exposed bamboo.

# READY, SET, BUILD



We understand that building any new home is a big project. With a Bamboo Living Home package, you'll receive your bamboo structure in easy-to-assemble panels.

To complete your project, you'll also need a builder. We can provide you with a list of project managers and general contractors that are familiar with the construction of our bamboo homes, or you can hire your own.

## THE 12 STEP PATH TO BAMBOO NIRVANA

1

### Visit a Bamboo Living Show House

House Tour Date and Location:

2

### Secure Property and Establish Your Budget

Property Address:

Budget:

3

### Choose a Bamboo Living Home Model

Model:

Floorplan Size:

Additional Options:

4

### Arrange a Site Visit with one of our Architects

Date of Site Visit:



After the site visit, you'll be provided with architectural CAD drawings to give to your builder to get an accurate finish estimate.



# READY, SET, BUILD

5

## Sign your Bamboo Living Contracts and Place Deposit

Deposit Amount:



As soon as Bamboo Living receives your production deposit, our team of expert craftsmen start to build your dream bamboo home at our facility!

6

## Hire your Project Manager or General Contractor

Name:

Build Estimate:

Electrician:

Plumber:

7

## Choose your finishes and materials with your Builder

Supplier:

Flooring*:	<input type="text"/>	Cabinets*/Countertops:	<input type="text"/>
Windows:	<input type="text"/>	Hardware:	<input type="text"/>
Doors*:	<input type="text"/>	Appliances:	<input type="text"/>
Plumbing Fixtures:	<input type="text"/>	Lighting:	<input type="text"/>
Interior Wall Finishes*:	<input type="text"/>	Exterior Wall Finishes*:	<input type="text"/>



While you're working on your site, we're busy finishing your home. We send you photos and progress reports from the factory during the build. It takes an average of 8 weeks for production and 6 weeks to ship and arrive at your site.



\* Bamboo Living can provide - see Upgrades & Options on page 6 or call for details.

# READY, SET, BUILD

8

## Start Your Site Work

Start Date:

Clearing/Leveling Land:

Foundation:

Utilities Hook-up:

Sub-floor:

9

## Your Home Ships!

Pay remainder of contract:

10

## Assemble Your Bamboo Living Home Kit (usually 1-5 days)

Assembly Start Date:

11

## Finish the House

Start Date:

Flooring installation:	<input type="text"/>	Lighting:	<input type="text"/>
Windows/Doors Install:	<input type="text"/>	Roofing:	<input type="text"/>
Plumbing:	<input type="text"/>	Interior Wall Finishing:	<input type="text"/>
Electrical:	<input type="text"/>	Exterior Wall Finishing:	<input type="text"/>
Fixtures:	<input type="text"/>	Cabinets:	<input type="text"/>
Appliance Hook-up:	<input type="text"/>	Finish Carpentry:	<input type="text"/>
Landscaping:	<input type="text"/>	Painting:	<input type="text"/>

12

## Move In and Enjoy!

Housewarming Party Date:



Congratulations!  
You've achieved Bamboo Enlightenment!

Not only are you the proud owner of a beautiful bamboo home, but you know you've made a great choice for yourself and the planet. You've sequestered tons of carbon, and the world is a better place because of you!





# BAMBOO LIVING: MEET YOUR DREAM TEAM

Bamboo Living's mission is to protect and restore our planet by pioneering the use of timber-grade structural bamboo as a building material.

We believe the era of half measures has passed. The time to make big and bold changes is upon us. Increasing the use of bamboo as a major building material is an essential step in the right direction, and it will require an important paradigm shift.

Adopting the use of bamboo globally will help reduce global warming, restore the native forests of the world, protect our watersheds, reduce top soil erosion, and raise entire communities out of poverty. We dream big, and we invite you to grow our vision with us.

## David Sands, AIA, Co-founder & Chief Architect LEED accredited professional

David Sands received his Masters in Architecture in 1982 from the University of Florida, and in 1995 he co-founded Bamboo Living with Jeffree Trudeau. David is an international speaker on the subject of structural bamboo and has presented at the American Institute of Architects National Convention and the World Bamboo Congress.

David believes that working with bamboo reflects the person he strives to be: strong, resilient and flexible, with a healthy openness that provides inner peace.



## Angela Sugar, Sales & Office Manager

Angela Sugar joined the Bamboo Living Team with a background in school administration and nonprofit management. Born and raised on the Big Island of Hawai'i, Angela earned her B.A. in Hispanic Studies at Lewis & Clark College in Portland, Oregon, and spent two semesters abroad in the Dominican Republic and Chile.

An avid traveler, Angela is fascinated by different languages, cultures, and ways of living around the world. At Bamboo Living, Angela enjoys seeing people create their unique dwellings, which embody their personal style and their passion for the health of the planet. Angela admires the beauty, strength, and sustainability of bamboo structures, and she is thrilled to be a part of the bamboo movement.

# BAMBOO LIVING: MEET YOUR DREAM TEAM

## Raquel Freitas, Architectural Designer

Raquel Freitas joined the Bamboo Living Team in 2008. Watching clients fulfill their dreams of living in an eco-friendly home has propelled her passion for a sustainable world.

Raquel is originally from Brazil, where she received her Bachelor's Degree following 5 years of Architectural studies in 2001. Upon graduation, she began designing for commercial and residential clients and providing interior design services.

Raquel is an integral part of the Bamboo Living process, providing exceptional design capabilities, architectural proficiency, logistics skills, and a remarkable eye for detail.



## Samantha Smith, Director of Marketing

Samantha Smith brings over 15 years of experience in executive leadership to her role as Director of Marketing for Bamboo Living. As owner of a web development and internet technology company for the past 8 years, preceded by her position as Sales Manager for the fastest growing travel company in the nation, Samantha is a recognized and acclaimed expert in marketing, brand strategy, and product innovation.

Samantha's enthusiasm for eco-friendly construction became clear while serving as the CEO of a Hawaii based building company. Joining the world's leading bamboo architect, she sees a global opportunity and has set the intention of co-creating a world precedent for promoting the adoption of bamboo as a mainstream building material.

## Jun Ybanez, Director of Factory Operations

Jun Ybanez graduated with a Bachelor of Science in Industrial Engineering from Cebu Institute of Technology, Philippines. He began working for Bamboo Living in January of 2006 as the Director of Factory Operations at Bamboo Hardwoods, Vietnam.

Jun held a number of positions in the manufacturing industry before falling in love with the beauty and structural integrity of bamboo the first time he saw a Bamboo Living Home. Since then, he has been leveraging his skills and knowledge toward factory operations. Jun leads the team of expert artisans sculpting exquisite bamboo structures made from the most rapidly renewable resource on the planet.



# TESTIMONIALS

## Catherine Ridder

*I wanted to say "Thank You" for envisioning and manifesting such a beautiful dream into reality. Mahalo many times over for all your hard work and efforts on my behalf over the last 10 months. I hope my home inspires many others to build bamboo homes as well.*



## Renee Loux

author & tv host of Green Living

*We fell in love with bamboo, and the way it reflects our values and green lifestyle. We asked David to design and create an office for Shep, and then shortly afterwards, we commissioned the first 2 story internationally certified bamboo home in the world. The result exceeded our expectations. Everyone that enters is struck by the artisan quality, warmth, living-breathing materials, and organic feeling.*

## Jeanne Angelheart

founder and former owner of FLAX Designs

*I loved co-creating with David Sands and the good people at Bamboo Living, and was able to adapt existing designs to my own aesthetic, and the results are a beautiful sight to behold, indeed, and all built from the most renewable material on Mother Earth.*

